

PROJECT CASE STUDY

GWELVA LANDING, MARAZION ENVIRONMENTAL RISK ASSESSMENT





PROJECT SCOPE

REDS Group Environmental Consultancy were commissioned by Cornish Heritage Builders and St Aubyn Estates to carry out a review of potential contamination risks associated with their construction project to maintain and extend the existing Gwelva Landing at Marazion, Cornwall, bringing increased access to the iconic St Michael's Mount.

The construction work involved the removal of existing bedrock and mass concrete from the landing area as part of initial site preparation, before the construction of a new raised landing structure that was faced with granite blocks.

This logistically complex project was completed in the highly sensitive inter-tidal zone at Marazion, under a Marine License issued by the Marine Management Organisation. Strict conditions were imposed to ensure protection of the marine environment.

The only access to the construction site was across the foreshore from Marazion village. Due to the site setting, the project had to be completed outside of the main tourist seasons, with available working hours limited by the tidal cycle and potential weather delays.

PROJECT WORKS RISK CONSULTANCY

The purpose of our review was to identify potential contamination risks associated with the planned construction works and, where possible, recommended suitable control measures to either remove or mitigate potential risks.



PROJECT WORKS RISK CONSULTANCY

Each stage of the construction program and proposed methodology was reviewed with Cornish Heritage Builders' Project Director in advance of the works commencing.

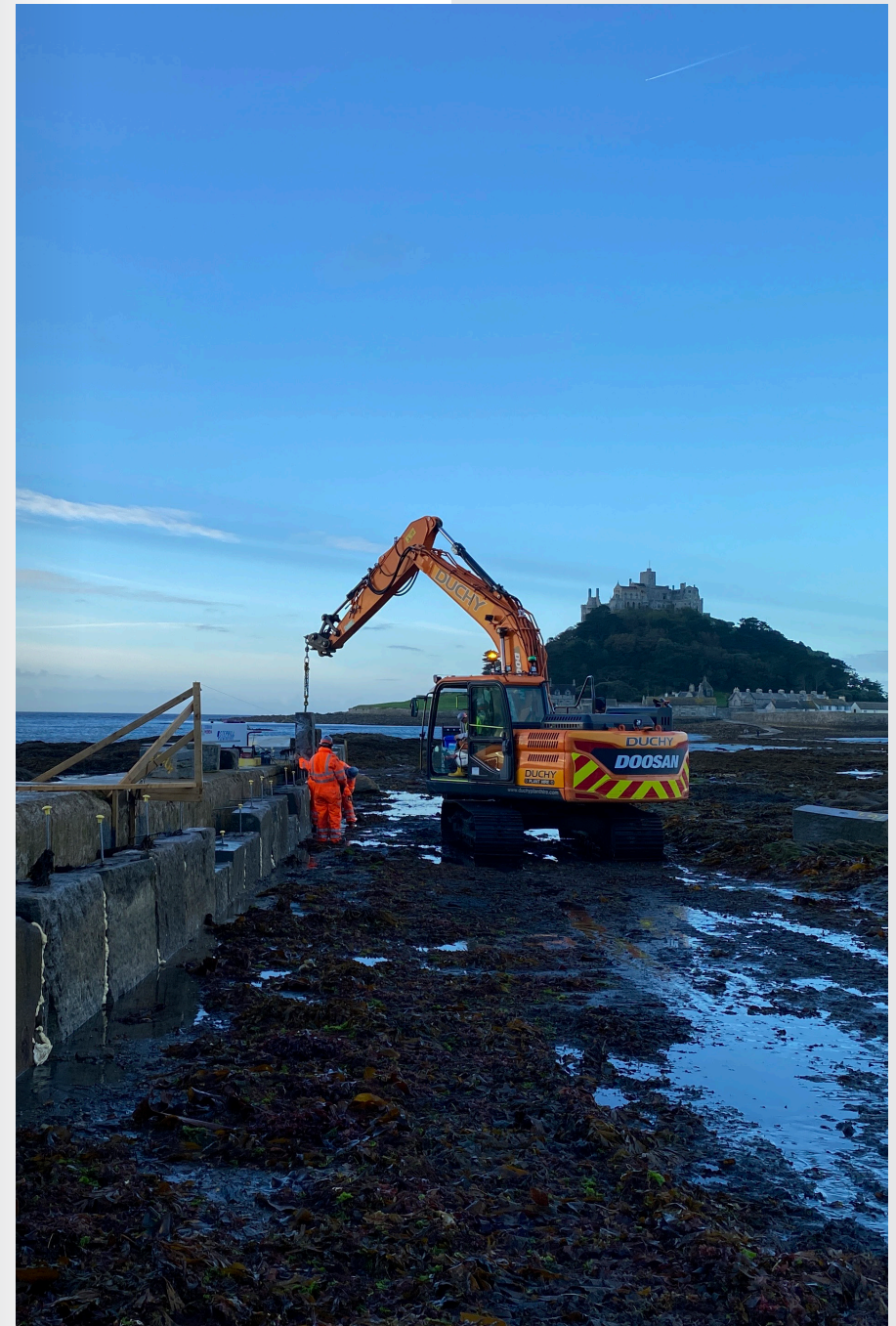
Due to the forward-thinking and collaborative approach taken by the construction team, we identified and removed several key potential contamination risks, and additional modifications were made to the proposed construction methodologies to further reduce pollution risk. Project specific pollution risk control measures that were implemented included:

Use of dedicated plant and machinery on the foreshore, with all mineral hydraulic oils replaced with biodegradable oils.

Establishment of offsite fueling facilities, with only HVO fuel used for all plant and equipment on site.

Preparation of all granite facing blocks completed offsite and delivered as required to a specific design plan.

Bespoke containment systems employed to capture concrete cutting slurry and wash-out liquids in holding tanks before removal from the foreshore to an offsite facility for processing and disposal.



PROJECT WORKS RESULTS

We compiled a detailed environmental review and pollution risk assessment report for the project, which was submitted to and approved by the Marine Maritime Organisation in advance of the project commencing.

During a pre-start meeting with the MMO, the project team was commended for their proactive approach to pollution risk management, and we were proud to have been part of that process.



CONTACT US

At REDS, we believe our people are our strongest asset. Our in-house proficiency and experience ensure that all projects are delivered in accordance with current legislation, on time, within budget and often exceeding expectations.

REDS Environmental Consultancy hold £5M Professional Indemnity insurance and extensive experience in the investigation, assessment and remediation of contaminated soil and groundwater. We offer pragmatic, commercially focused solutions and are able to call on all divisions within REDS to offer a full 'cradle to grave' service for all aspects of contamination risk management.

For more information about any of our services, or to obtain a quotation for your project, please call us on **0333 444 0004** or email **enviro@redsgroup.co.uk**

ACCREDITATIONS

REDS Group are proud to be UKAS ISO 45001, ISO 14001 Certified and ISO 9001 Certified.





**RESPONSE, ENVIRONMENTAL
& DECOMMISSIONING
SERVICES**

